



PALLADIUM  
HOTEL PALMYRA

# Meetings Redefined

PALLADIUM  
HOTEL GROUP

≡ FACT SHEET

≡ FAQ'S

MICE  
BY PALLADIUM





PALLADIUM  
HOTEL PALMYRA



Meeting  
& Events

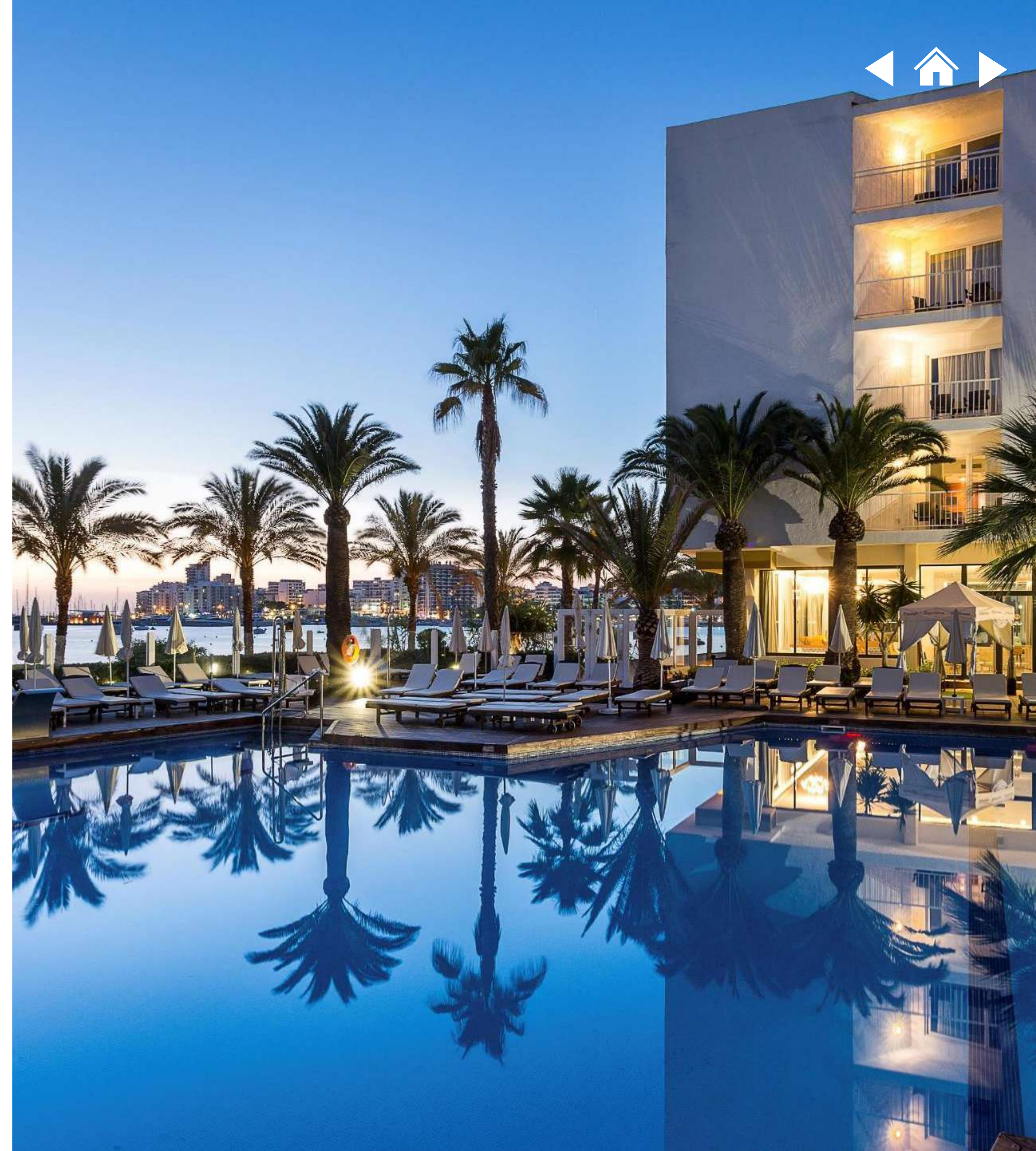
Fact Sheet



## Palladium Hotel Palmyra

It is a 4-star hotel, for adults only, located on the beachfront in the heart of San Antonio, one of the most popular destinations in Ibiza. It is located near the promenade full of establishments to eat or have a drink. It is an ideal hotel for groups where they can have fun or relax by the pool while having a cocktail, dining on the terrace or enjoying the incredible sunsets, while getting to know one of the areas of the island with the most spectacular beaches.

The hotel has 166 spacious rooms and 3 meeting rooms for conferences and events. It offers all the comforts and a wide variety of daily activities in the pool; paddle, yoga; games like billiards and table tennis; gym and live music every evening including DJs, bands and saxophonists. Guests can have breakfast facing the sea at Sunset View, watching the incredible sunsets from the lobby bar.



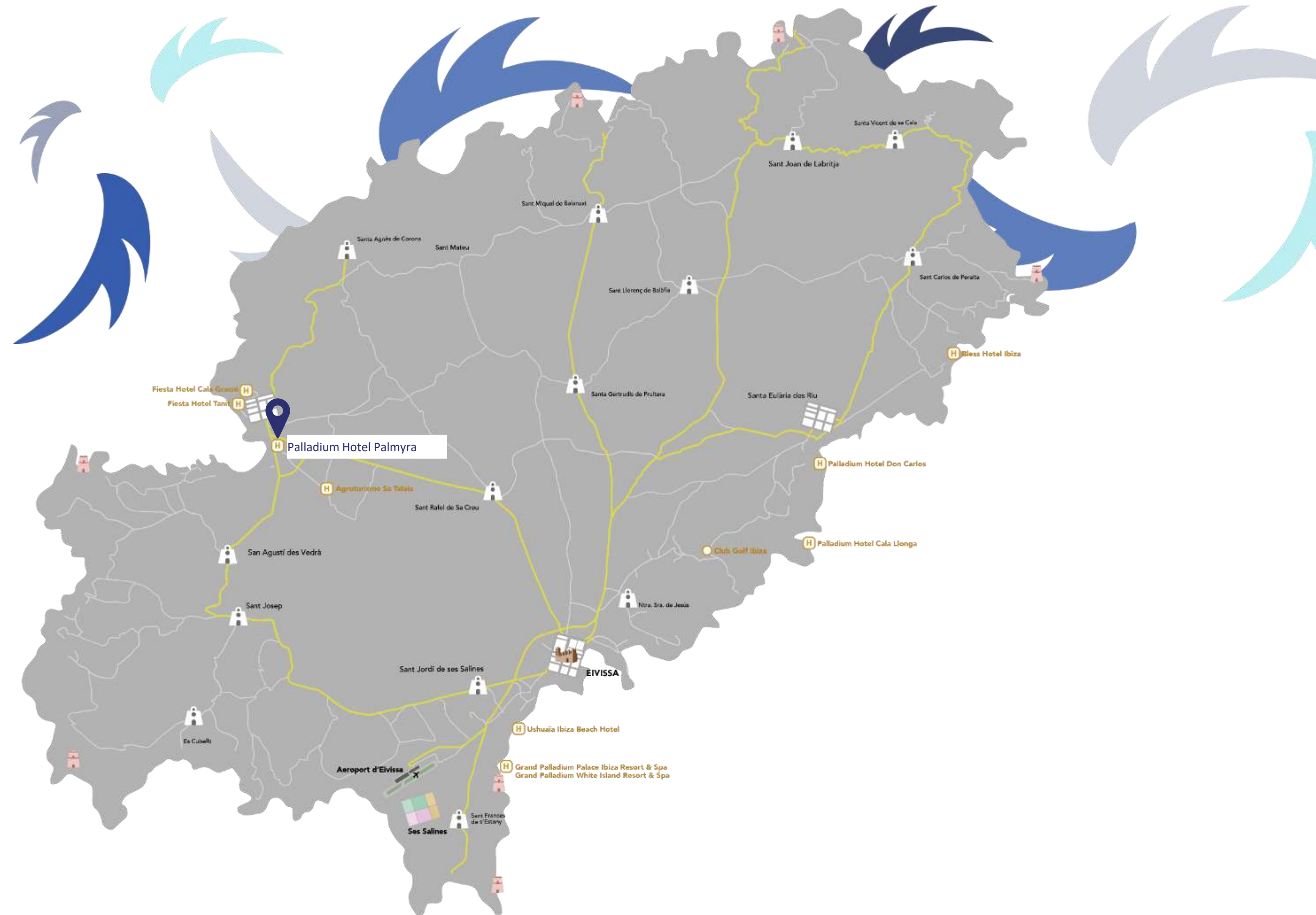


# Hotel Information



## PALLADIUM HOTEL PALMYRA

- 4 Stars Sup.
- Palladium Hotel Group Brand
- Refurbished in 2013
- 166 rooms
- 3 meeting rooms
- Largest meeting room: 120 m<sup>2</sup> (120 people theater style)
- Avda. Doctor Fleming 18, 07820 San Antonio, Ibiza
- +34 971 396 734
- How to arrive: by car, taxi or bus
- GPS POS: 38.97N, 1.30E
- Local currency: Euro | VAT: 10%
- Group bookings: [mice.ibiza@palladiumhotelgroup.com](mailto:mice.ibiza@palladiumhotelgroup.com)





# Rooms





# Rooms



## PALLADIUM HOTEL PALMYRA 166 ROOMS

COMMERCIAL NAME	ROOM TYPE	MAX. OCCUPANCY	TOTAL
SINGLE DELUXE	Standard (23 sqm)	2 adults	13
SINGLE DELUXE SEAFRONT VIEW	Deluxe (23 sqm)	2 adults	13
DELUXE	Deluxe (35 sqm)	3 adults	28
DELUXE SEA VIEW	Deluxe (35 sqm)	3 adults	56
DELUXE SEAFRONT VIEW	Deluxe (35 sqm)	3 adults	25
BUNGALOW DÚPLEX POOL ACCES	Dúplex (39 sqm)	3 adults	8
JUNIOR SUITE	Junior suite (40 sqm)	3 adults	8
JUNIOR SUITE POOL VIEW	Junior suite (40 sqm)	3 adults	7
JUNIOR SUITE PANORAMIC SEA VIEW	Junior suite (40 sqm)	3 adults	7
MASTER SUITE PANORAMIC SEA VIEW	Suite (89 sqm)	3 adults	1






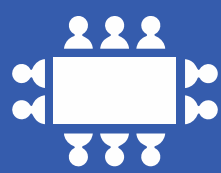




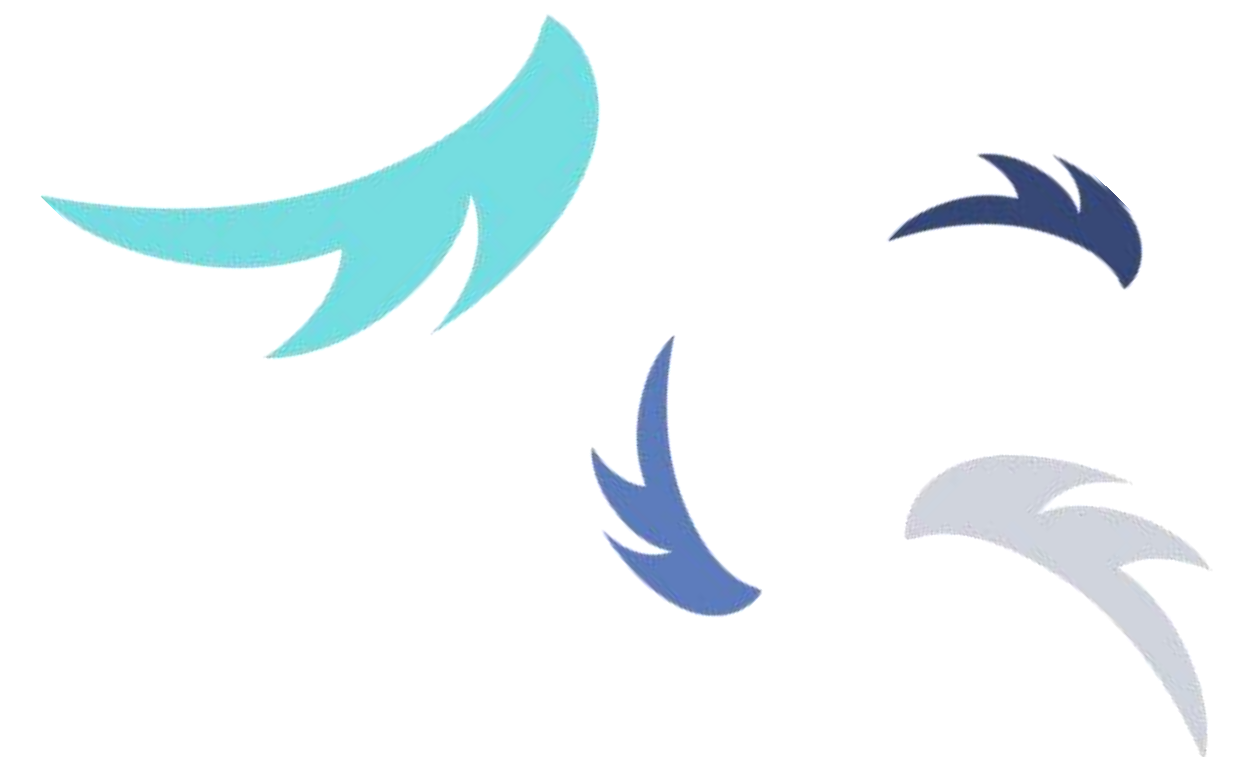
# Meeting Rooms



# Meeting Rooms

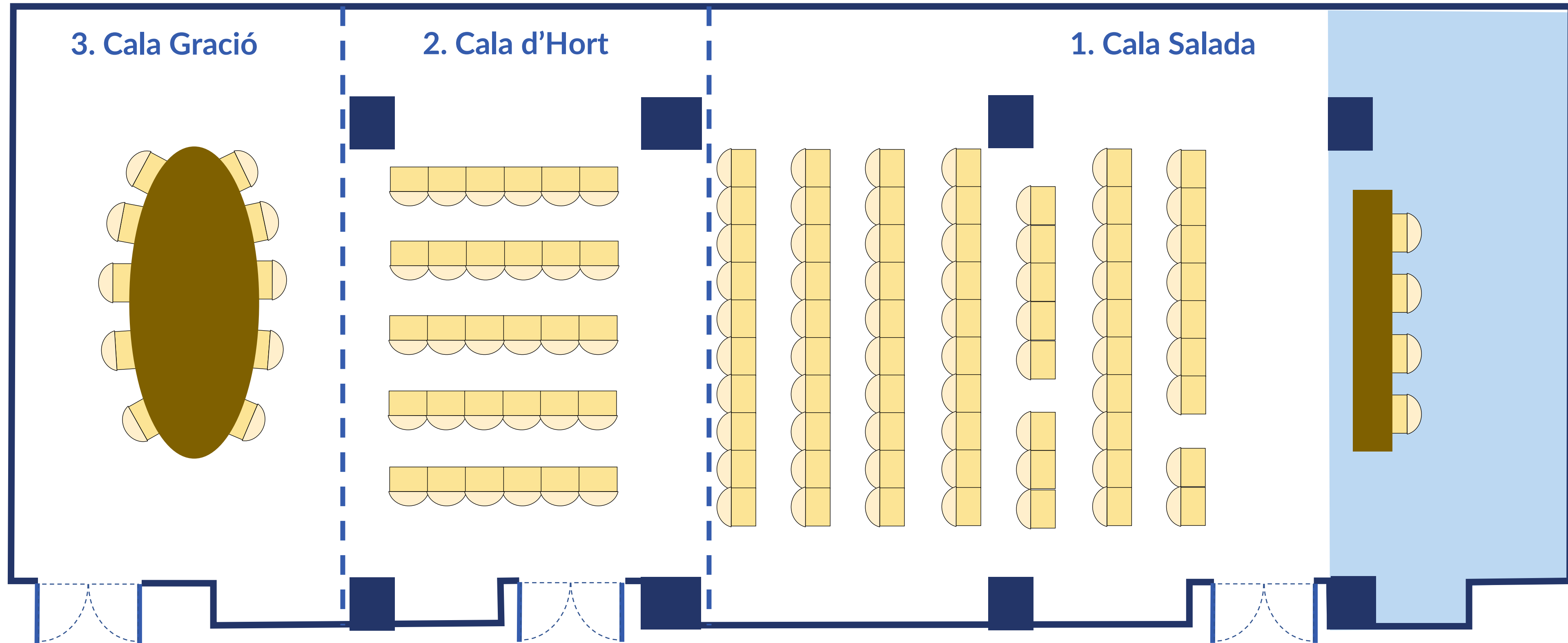


HALLS	SIZE M2	SIZE FT	 THEATER	 CLASSROOM	 U-SHAPED	 BOARDROOM	 BANQUET	 COCKTAIL	WIDE M	LENGTH M	HEIGHT M	SUNLIGHT	EQUIPMENT
1. Cala Salada	90	295,27	60	40	20	24	50	70	8,10	11,34	2,60	NO	On demand
2. Cala d'Hort	36	118,11	25		12	20		30	8,10	4,84	2,60	NO	On demand
3. Cala Gració	34	111,55	20			16	40	30	8,10	4,31	2,60	NO	On demand
Rooms 1+2+3	160	4499,31	120	80			100	150	8,10	20,49	2,60	NO	On demand





# Meeting Rooms







# Welcoming & Dining



# Welcoming & Dining



## LOBBY BAR



### Lobby bar

Type Of Cuisine: **Drinks**

Max. Capacity: **120 indoors**

Preferred Service: **Welcome Drinks**



## SUNSET VIEW



### Sunset View & Terrace Restaurant

Type Of Cuisine: **International**

Max. Capacity: **120 indoors + 60 outdoors**

Preferred Service: **Buffet Menu**

## Heaven's garden

mediterranean cuisine



### Heaven's Garden Restaurant

Type Of Cuisine: **International**

Max. Capacity: **20 indoors and 20 outdoors**

Preferred Service: **Served Menu**



## WHAT IS THE ESTIMATED DURATION?

It depends on the service to be hired. For "Welcome drinks" and "Coffee breaks" the approximate duration is 30 minutes. "Reception" options it is 1 hour, "Finger food" option it is 1 hour and a half.. The "Open Bar" is contracted by hours of duration.

## HOW MANY GUESTS ARE THESE MENUS FOR ?

We offer our menus for groups from 10 to 120 people.

## SETUP?

The usual set-up of the venue where the event will be held. There is the possibility of a gala set-up, but this would entail a supplement. In the Gala Menu, this set-up is included

## HOW CAN I BOOK ?

Simply confirm your desired date and we will prepare a proforma invoice. Our bank details are on the form for a bank transfer to be made into our bank account in Spain. The event will not be considered to be confirmed without payment of the deposit and therefore may be subject to changes.

## WHAT HAPPENS IF IT RAINS?

We have different outlets so that you can hold your event without worrying.

## WHO COORDINATES THE EVENT?

We have a designated person at the hotel, in addition to our restaurant managers, who will accompany you before and during the event.

## MUSIC?

The music available will be the music of the venue where the event is held. However, there is the possibility of hiring a DJ for an additional charge.

## DECO?

Special table decorations and any other type of decoration can be hired at the client's expense.





PALLADIUM  
HOTELS

We make sun storytellers

MICE Sales Office

+34 971 396 734 · [mice.ibiza@palladiumhotelgroup.com](mailto:mice.ibiza@palladiumhotelgroup.com)

**MICE**  
BY PALLADIUM

**PALLADIUM**  
HOTEL GROUP

PALLADIUMHOTELGROUP.COM